

Ruwac® USA Industrial Vacuums

AV 1000/2000 Series

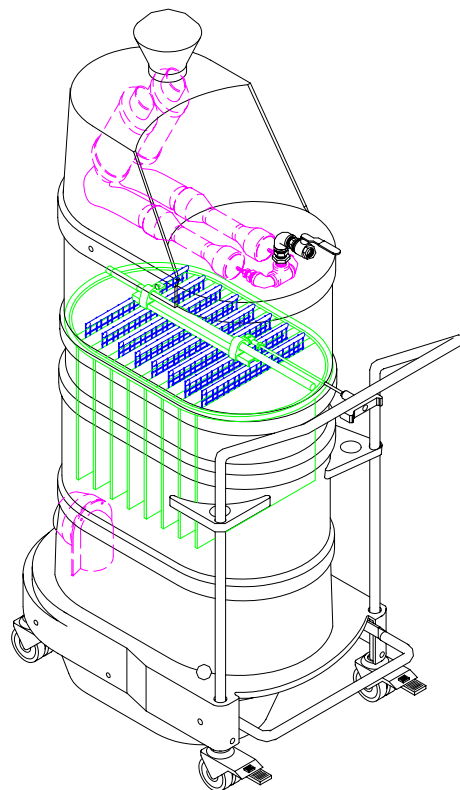
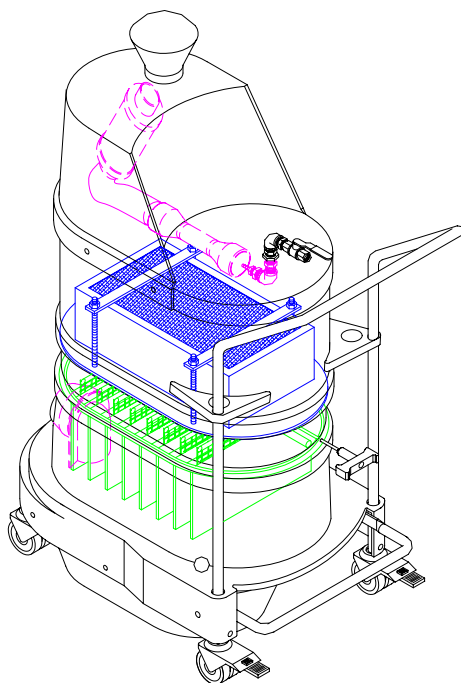
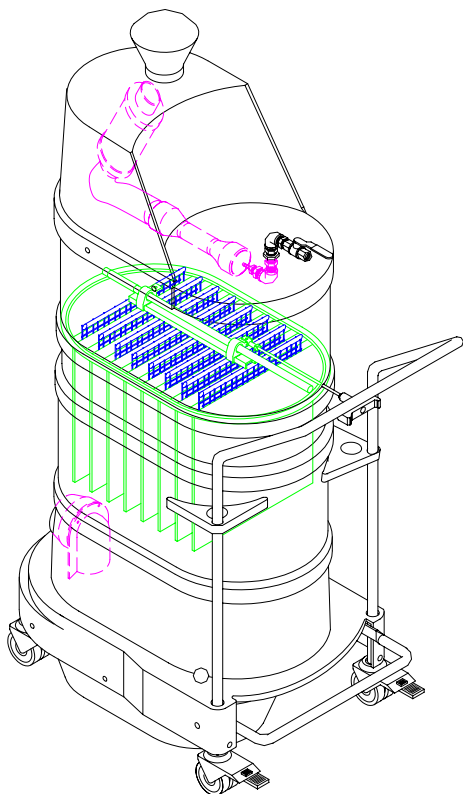
Parts Manual

Model No.

Serial No.

Filter No.

Start-Up Date



Contents

Warranty
Safety
Parts

REVISION - F 10/14/08

Ruwac USA - 728 Main St. - Holyoke, Ma. 01040 - Tel# 413-532-4030 - Fax# 413-532-4039

Warranty

RUWAC warrants that new equipment which are complete units and are sold and/or manufactured by RUWAC, Inc. will be free from defects in material and workmanship for a period of 18 months from date of shipment or 12 months from date of start-up, whichever come first. RUWAC warrants that replacement parts sold hereunder will be free from defects in material or workmanship for a period of 120-days after the date of shipment. RUWAC machines that have been completely re-built at the factory will carry a 180-day warranty from date of shipment. All field repairs preformed by authorized RUWAC service personnel are covered by a 120-day parts only warranty.

RUWAC, Inc. will not assume any responsibility under the terms of this limited warranty on equipment, which has not been paid in full. This warranty does not apply to any equipment that has been disassembled, repaired, or otherwise altered by any person without the written authorization of RUWAC'S service department, nor does it apply to any product that has been subjected to failure sure to corrosive or abrasive attack, misused, damaged, or improperly installed, nor does it apply to motors, controls, and components not manufactured by RUWAC, Inc. Motors, controls, and other Sub vendor's components therefor are warranted only to the extent of the manufacture's warranty. All warranty work on such products must be authorized by RUWAC, Inc. and must be performed in an authorized shop as designated by the manufacturer. RUWAC sole liability and buyer's sole and exclusive remedy hereunder is the replacement or repair at RUWAC'S option of products not complying with this warranty. Such repair or replacement shall be F.O.B. RUWAC'S factory, and RUWAC reserves the right to invoice all expenses incurred when repairs are made in the field at the request of the customer, except as specifically set forth herein, RUWAC makes no warranty express or implied, with respect to the products and/or service supplied hereunder, this warranty is in lieu of and excludes all other warranties, including without limitation, any warranty of merchantability, fitness for a particular purpose, or conformance to purchaser's specifications.

Safety

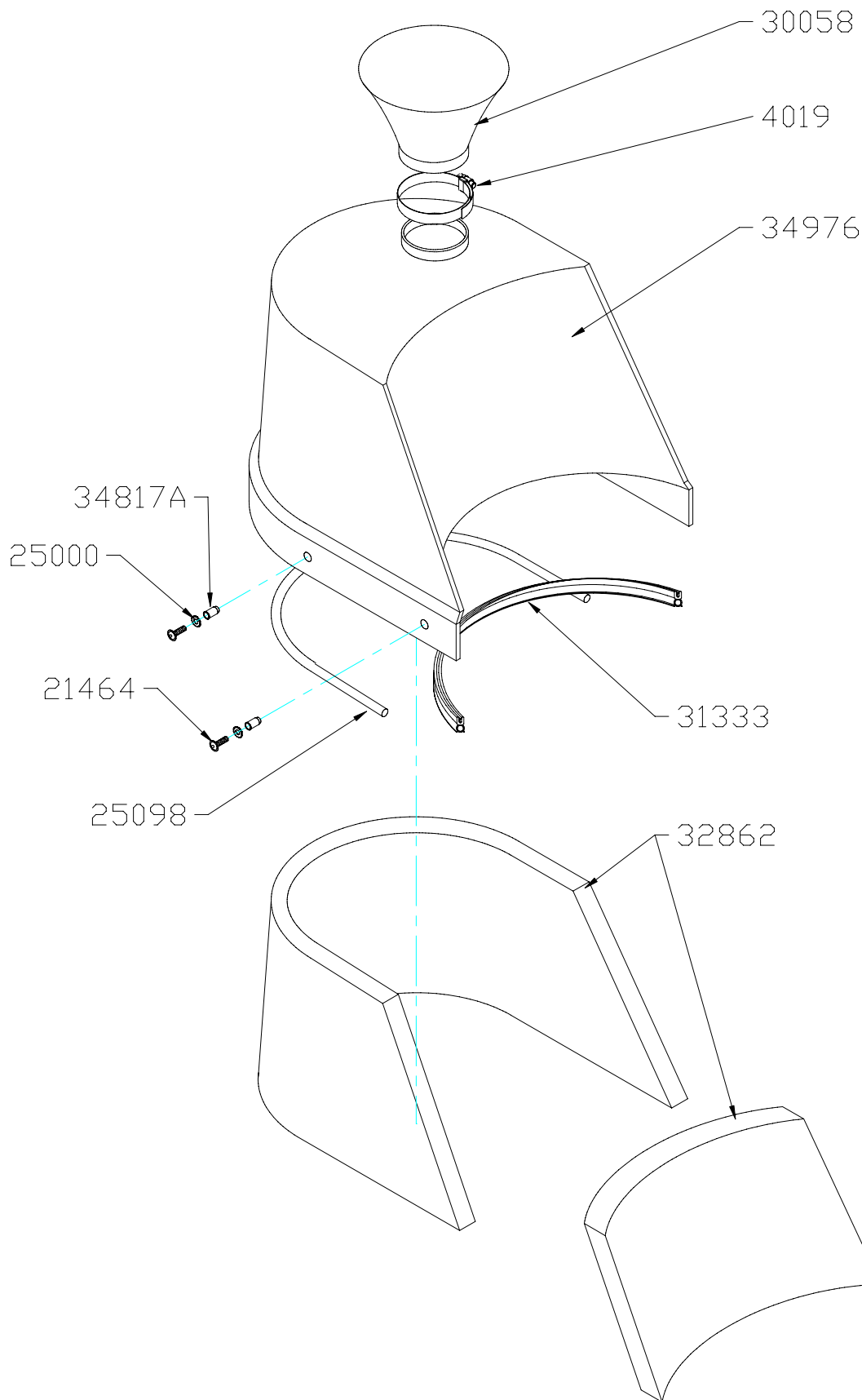
CAUTION: Disconnect the machine from the air supply before and during inspection and maintenance.

CAUTION: Always follow safe lifting procedures.

CAUTION: A dust mask should be worn when working with fine material.
--

CAUTION: Machines equipped with a reverse pulse module must always be supplied adequately when the machine is on. The module is controlled by an electrical sequential timer (requires a 110 volt power supply) or differential pressure switch. The module itself requires a source of compressed air of 90 PSI at 2-4 CFM (depending on module). This device prevents the accumulation of material on the filter and therefore prevents the machine from being held under excessive stresses due to material blockage.
--

CAUTION: Machines equipped with a motorized shaker must be supplied with a three phase, 230-460 volt (depending on motor) power supply when ever the machine is on. The motorized shaker is controlled by an electrical sequential timer (requires a 110 volt power supply), a differential pressure switch or a manual switch. Manual switch models should be actuated before and after every use while the vacuum is off. This device prevents the accumulation of material on the filter and therefore prevents the machine from being held under excessive stresses due to material blockage.



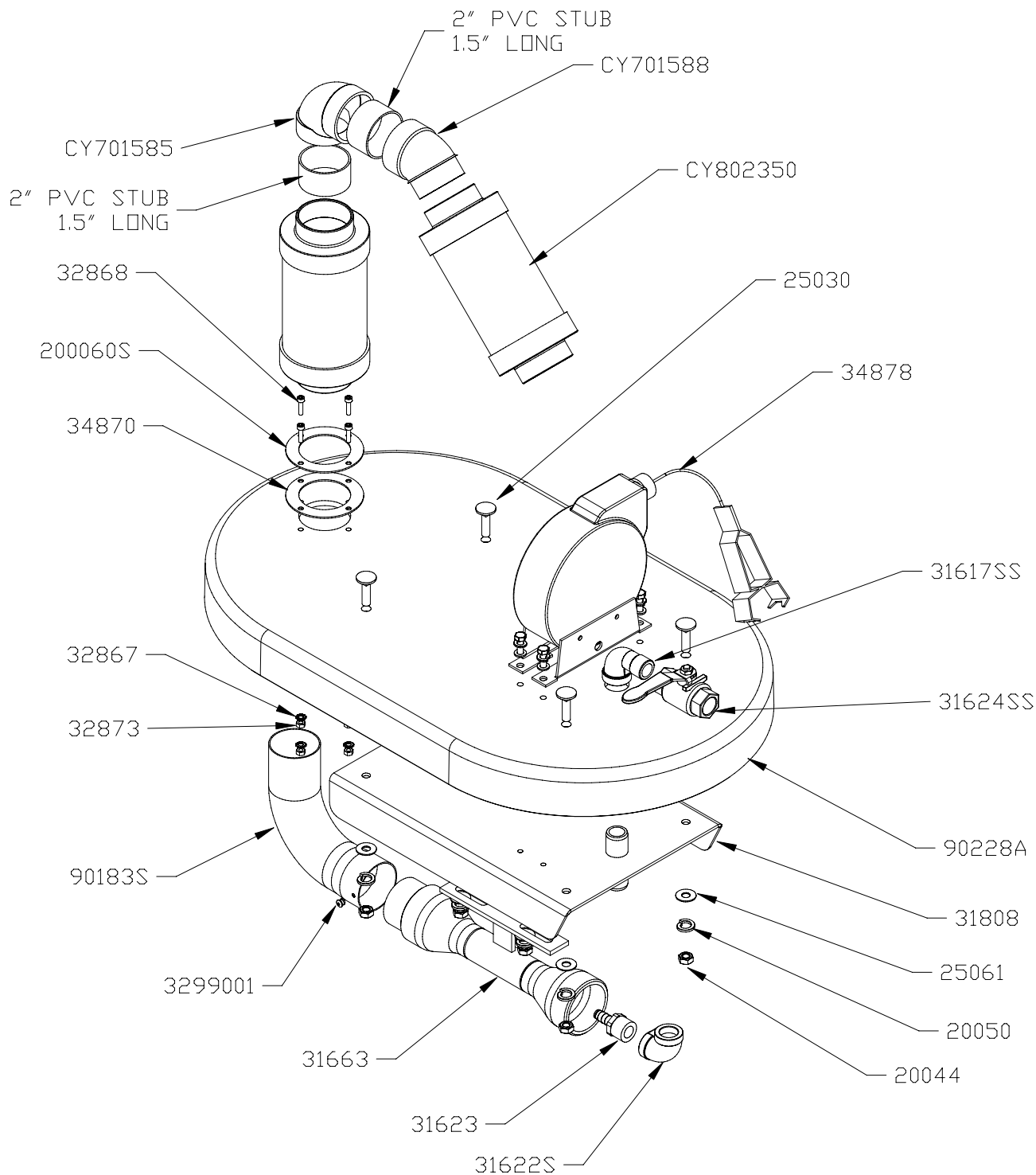
54 Winter Street
Holyoke, MA 01040, USA

AIR VAC DIFFUSER ASSEMBLY

REV C	REV DATE: 10/14/08	D.W.N. D.J.S.	DATE: 6-12-03
-------	--------------------	---------------	---------------

AV DIFFUSER LID ASSEMBLY

PART NUMBER	DESCRIPTION	QTY
30058	RED DIFFUSER BAG	1
4019	HOSE CLAMP,1-1/8" TO 3",SS	1
34976	SILENCER HOOD, BLACK, SINGLE PORT EXHAUST	1
34817A	M6 BLIND PEM	4
25000	1/4" STAR WASHER	4
21464	M6 x 30, 8.8, ALLEN HEAD SCREW	4
32862	FOAM MATERIAL, SILENCER HOOD, CUT TO FIT	1
25098	GASKET,ROUND,10MM	3.54
31333	GASKET,SELF GRIPPING,11X21MM EPDM	1.25



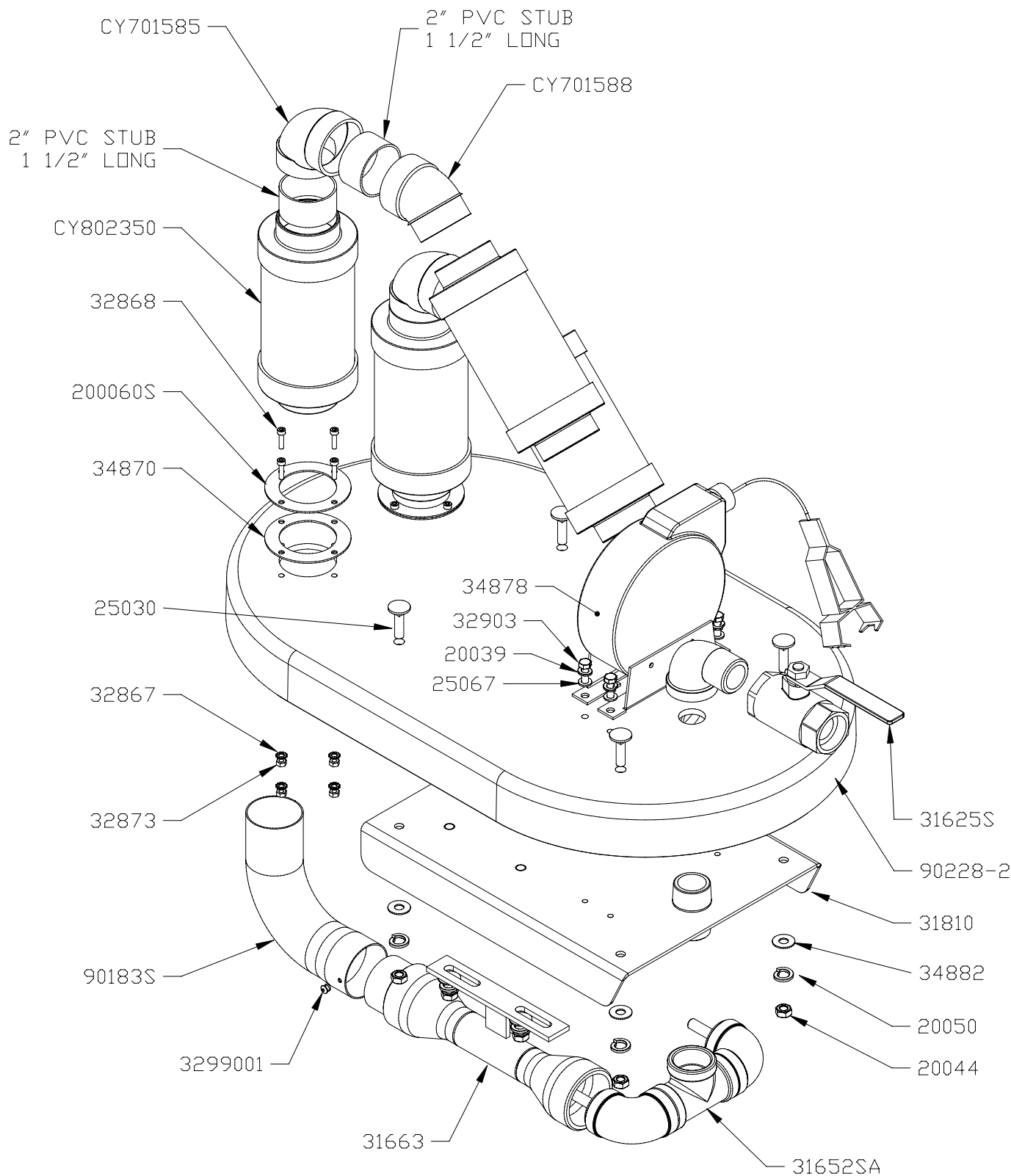
54 Winter Street
Holyoke, MA 01040, USA

AV 1000 MOTOR DECK

REV A REV DATE: 9/24/08 D.W.N. D.J.S. DATE: 6-11-03

AV1000 MOTOR DECK ASSEMBLY

PART NUMBER	DESCRIPTION	QTY
90228-1	AV1000 DECK	1
31808	VENTURI PLATE, AV1000	1
31663	VENTURI	1
90183S	90 EL, 2" CUSTOM SS	1
34870	INLET GASKET, 50mm	1
200060S	50mm INLET RING SS	1
34878*	GROUNDING REEL (OPTIONAL)	1
31622S	ELBOW 90, 1/2" NPT SS	1
31623	HOSE BARB, 1/2" NPTx 3/8" BARB	1
CY802350	PVC SILENCER, 6"	2
CY701585	90 ELBOW, 2" PVC	1
CY701588	45 STREET ELBOW, ONE EXP, 2" PVC	1
31617SS	ELBOW, 90 Deg, 1/2" NPT, STREET STAINLESS STEEL	2
31624SS	BALL VALVE, 1/2" NPT FULL PORT, SS	1
25030	CARRIAGE BOLT, M8X30	4
20044	M8 HEX NUT, ZINC	6
20050	M8 SPLIT LOCK WASHER, ZINC	6
25061	M8 FLAT WASHER, ZINC	6
32868	M5x16 SOCKET HEAD CAP SCREW	4
32867	M5 EXT TOOTH LOCK WASHER, ZINC	4
32873	M5 HEX NUT, ZINC	4
3299001	RIVET, BLIND, 1/4" LONG x 5/32"	1
32903	M6x20 HEX CAP SCREW, ZINC (FOR OPTIONAL GROUND REEL)	4
20039	M6 SPLIT LOCK WASHER, ZINC (FOR OPTIONAL GROUND REEL)	4
25067	M6 FLAT WASHER, ZINC (FOR OPTIONAL GROUND REEL)	4



54 Winter Street
Holyoke, MA 01040, USA

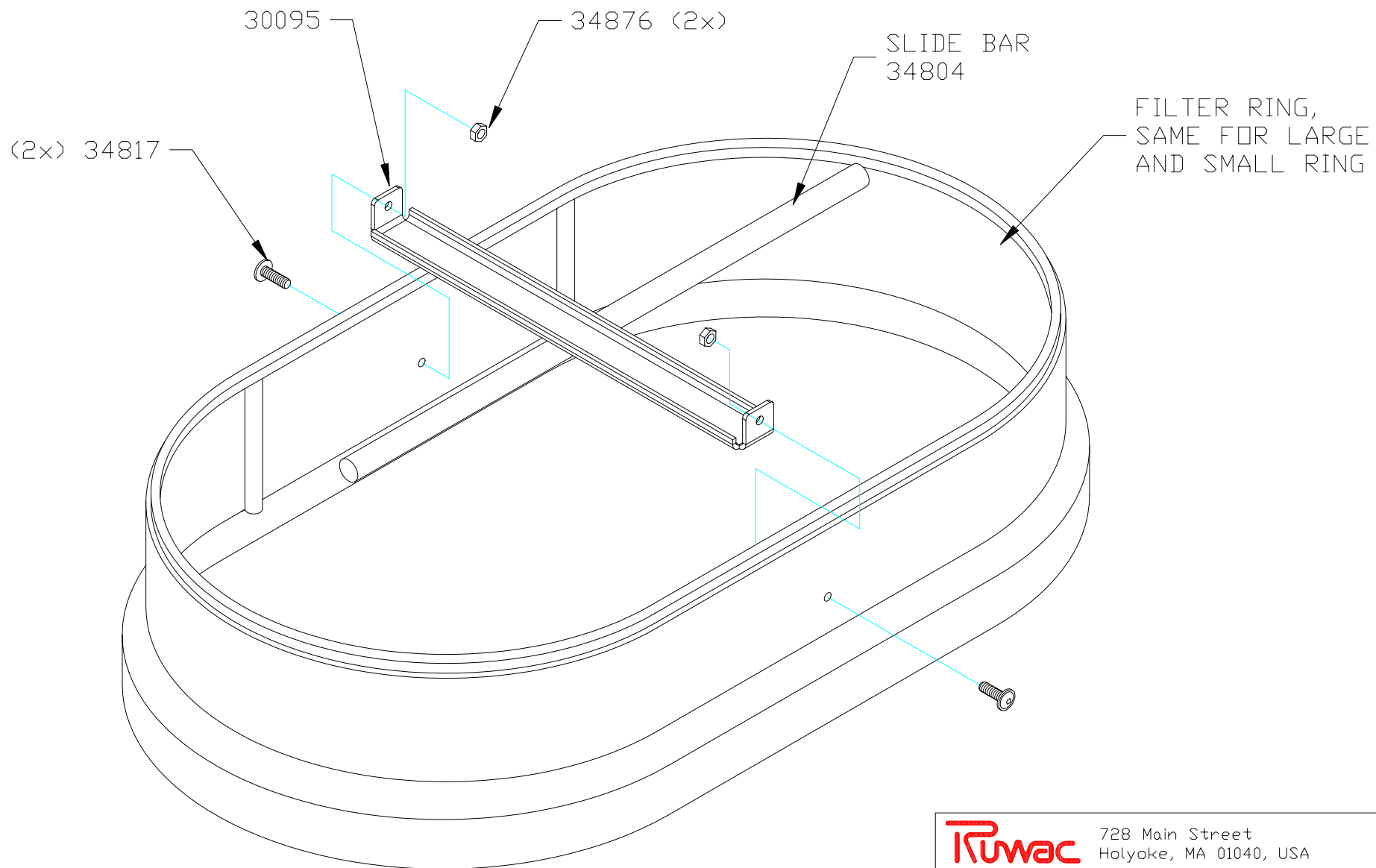
AV 2000 MOTOR DECK

REV B REV DATE: 9/29/08 D.W.N. D.J.S. DATE: 6-11-03

AV 2000 MOTOR DECK ASSEMBLY

PART NUMBER	DESCRIPTION	QTY
90228-2	AV 2000 DECK	1
31810	VENTURI PLATE, AV2000	1
31663	VENTURI	2
90183S	90 EL, 2" CUSTOM	2
34870	INLET GASKET, 50mm	2
200060S	50mm INLET RING SS	2
34878	GROUNDING REEL (OPTIONAL)	1
25030	CARRIAGE BOLT, M8x30	4
20044	M8 HEX HEAD NUT, ZINC	8
20050	M8 SLIPT LOCK WASHER, ZINC	8
25061	M8 FLAT WASHER, ZINC	8
32868	M5x16 SOCKET HEAD CAP SCREW	8
32867	M5 EXT TOOTH LOCK WASHER, ZINC	8
32873	M5 HEX NUT	8
3299001	RIVET, BLIND, 1 1/4" LONG x 5/32"	2
32903	M6x20 HEX CAP SCREW, ZINC (FOR GROUND REEL)	4
20039	M6 SPLIT LOCK WASHER, ZINC (FOR GROUND REEL)	4
25067	M6 FLAT WASHER, ZINC (FOR GROUND REEL)	4
31652SA	DUAL VENTURI TEE ASM, STAINLESS STEEL	1
34916S	ELBOW,90,STREET,1",STAINLESS	1
31625S	BALL VALVE,1",FULL PORT,SS	1
CY802350	PVC SILENCER, 6"	4
CY701585	90 ELBOW, 2" PVC	2
CY701588	45 STREET ELBOW, ONE EXP, 2" PVC	2

NOTICE: THIS DOCUMENT IS THE PROPERTY OF RUWAC U.S.A. NEITHER THIS DOCUMENT NOR ANY DATA OR INFORMATION HEREIN SHALL BE COPIED OR REPRODUCED IN ANY MANNER, LOANED OR OTHERWISE DISPOSED OF, OR USED FOR ANY PURPOSE, WHATSOEVER, WITHOUT THE PRIOR WRITTEN PERMISSION OF RUWAC U.S.A. IF THIS DOCUMENT IS LOANED BY OR WITH THE AUTHORITY OF RUWAC U.S.A., THE BORROWER, IN CONSIDERATION OF SUCH LOAN, AGREES TO THE FOREGOING CONDITIONS AND TO RETURN THIS DOCUMENT UPON REQUEST OR UPON COMPLETION OF THE SPECIFICALLY AUTHORIZED WORK IT WAS ISSUED.



Ruwac

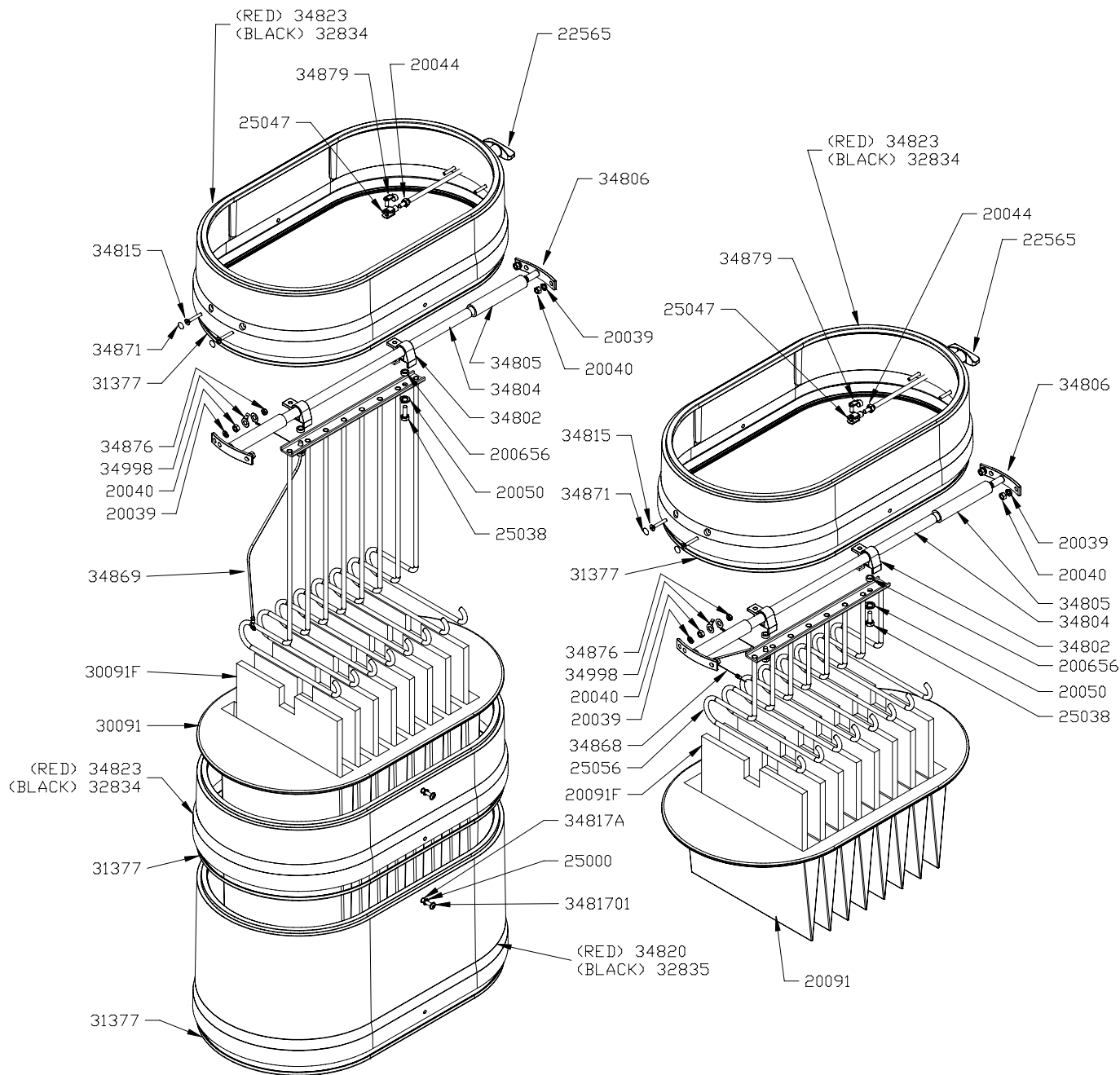
728 Main Street
Holyoke, MA 01040, USA

SHAKER SUPPORT ASSEMBLY

REV	REV DATE:	D.W.N. D.J.S.	DATE: 8-28-03
-----	-----------	---------------	---------------

SHAKER SUPPORT ASSEMBLY

PART NUMBER	DESCRIPTION	QTY
34817	M6X20 ALLEN HEAD SCREW	2
30095	FILTER BAR SUPPORT	1
34876	M6 LOCK NUT	2



NOTE:

- 1.) GROUND WIRES ARE FOR RED MACHINES ONLY.
- 2.) GASKETS ARE FOR RED MACHINES ONLY.



54 Winter Street
Holyoke, MA 01040, USA

FILTER ASSEMBLIES
FOR 1.2, & 2.6 sq/m FILTERS

REV B

REV DATE

10/14/08

D.W.N.

D.J.S.

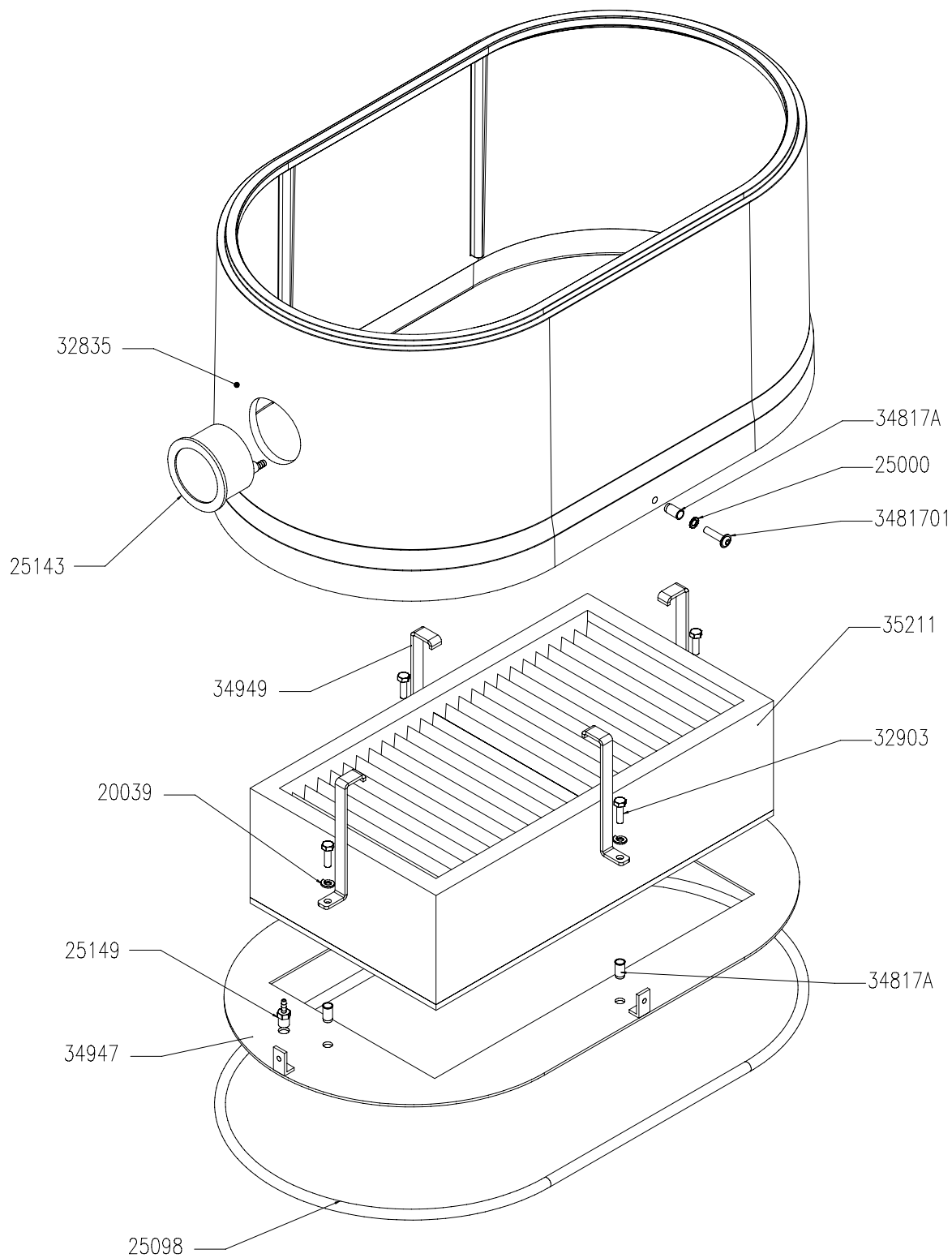
DATE: 6-17-03

1.2 FILTER ASSEMBLY

PART NUMBER	DESCRIPTION	QTY
34823	HOUSING SPACER,SMALL,RED	1
32834	HOUSING SPACER,SMALL,BLACK	1
20044	M8-8 HEX NUT,ZINC	1
22565	SHAKER BAR WITH SWIVEL HANDLE	1
34806	SHAKER ROD MOUNTING SUPPORT	2
20039	M6 SPLIT LOCK WASHER,ZINC	4
20040	M6-8 HEX NUT,ZINC	4
34805	CLEAR HOSE, 3/4 ID	2
34804	SLIDE BAR	1
34802	SLIDE ASSEMBLY, W/HOOK	2
200656	SPACER,FILTER CAGE,D1,.170 THK,.540 OD,.340 ID	2
20050	M8 SPLIT LOCK WASHER,ZINC	2
25038	M8 X 20 HEX CAP,ZINC	2
20091	FILTER,13 SQ/FT,WS/D1	1
20091F	FILTER INSERT,1.2M2	8
25056	FILTER CAGE, 1.2	1
34868	GROUND, DEFLECTOR, 1.2 FILTER (RED ASM ONLY)	1
34998	GROUND CONNECTION,FOR BOLT (RED ASM ONLY)	2
34876	M6 LOCK NUT,ZINC (RED ASM ONLY)	1
31377	GASKET,NITRILE SPONGE,FOR HOUSING SPACERS,.25"X.150"	1
34871	PLASTIC PLUG 4.5/13	4
34815	M6 X 30 FLAT SOCKET CAP SCREW	4
25047	STEEL YOKE ENDS,DIN 71752 G6X12 M8,RT THRD	1
34879	SPRING CLIP,6X12	1

2.6 FILTER ASSEMBLY

PART NUMBER	DESCRIPTION	QTY
34823	HOUSING SPACER,SMALL,RED	2
32834	HOUSING SPACER,SMALL,BLACK	2
25047	STEEL YOKE ENDS,DIN 71752 G6X12 M8,RT THRD	1
34879	SPRING CLIP,6X12	1
20044	M8-8 HEX NUT,ZINC	1
22565	SHAKER BAR WITH SWIVEL HANDLE	1
34806	SHAKER ROD MOUNTING SUPPORT	2
20039	M6 SPLIT LOCK WASHER,ZINC	4
20040	M6-8 HEX NUT,ZINC	4
34805	CLEAR HOSE, 3/4 ID	2
34804	SLIDE BAR	1
34802	SLIDE ASSEMBLY, W/HOOK	2
200656	SPACER,FILTER CAGE,D1,.170 THK,.540 OD,.340 ID	2
20050	M8 SPLIT LOCK WASHER,ZINC	2
25038	M8 X 20 HEX CAP,ZINC	2
34817A	M6 BLIND PEM	4
25000	1/4 EXTERNAL STAR WASHER	4
3481701	M6X25 ALLEN HEAD SCREW	4
34820	HOUSING SPACER,LARGE,RED	1
32835	HOUSING SPACER,LARGE,BLACK	1
31377	GASKET,NITRILE SPONGE,FOR HOUSING SPACERS,.25"X.150"	3
30091	FILTER,28 SQ/FT,DS1	1
30091F	FILTER INSERT,2.6M2	8
34869	GROUND, DEFLECTOR TO 2.6 FILTER (RED ASM ONLY)	1
34998	GROUND CONNECTION,FOR BOLT (RED ASM ONLY)	2
34876	M6 LOCK NUT,ZINC (RED ASM ONLY)	1
34871	PLASTIC PLUG 4.5/13	4
34815	M6 X 30 FLAT SOCKET CAP SCREW	4



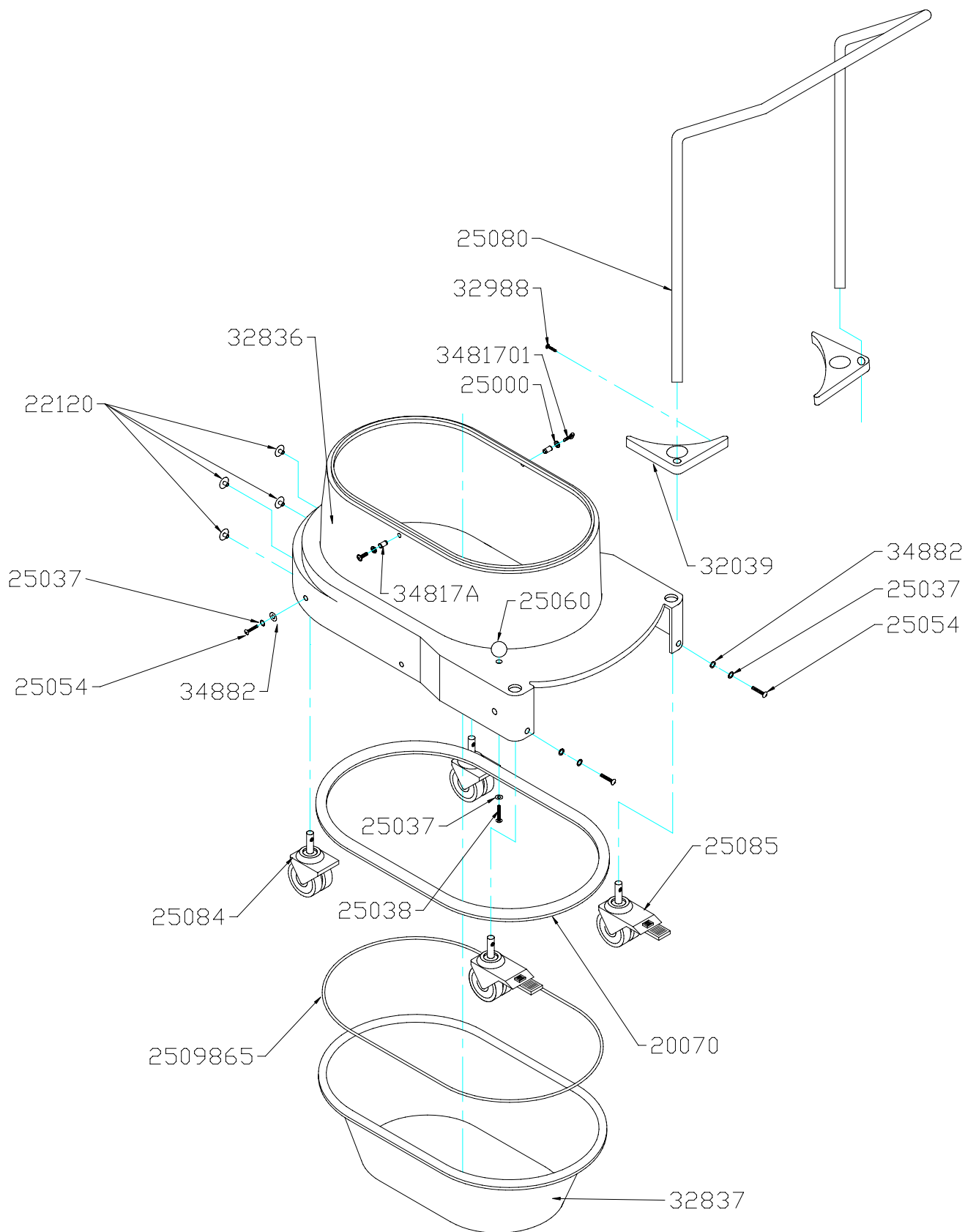
728 Main Street
Holyoke, MA 01040, USA

HEPA FILTER ASSEMBLY FOR AV SERIES

REV	REV DATE:	D.W.N. D.J.S.	DATE: 12/26/06
-----	-----------	---------------	----------------

HEPA FILTER & MINIHHELIC ASSEMBLY

PART NUMBER	DESCRIPTION	QTY
34817A	M6 BLIND PEM	6
25000	1/4" STAR WASHER,EXTERNAL	2
3481701	M6X25 ALLEN HEAD SCREW	2
35211	HEPA FILTER 40 SQ FOOT,WS,DS1	1
32903	M6X1.0 X 20 HEX CAP SCREW,ZINC	4
34947	HEPA ADAPTER PLATE	1
20039	M6 SPLIT LOCK WASHER	4
34949	HEPA HOLD DOWN BRACKET	4
32835	HOUSING SPACER,LARGE,BLACK	1
25098	GASKET,ROUND,10MM	1
25143	MINIHHELIC,WITH MOUNTING	1
25149	HOSE BARB,1/8 X 1/8,STRAIGHT, BRASS	1
34800	CLEAR HOSE, 1/8" ID	0.5



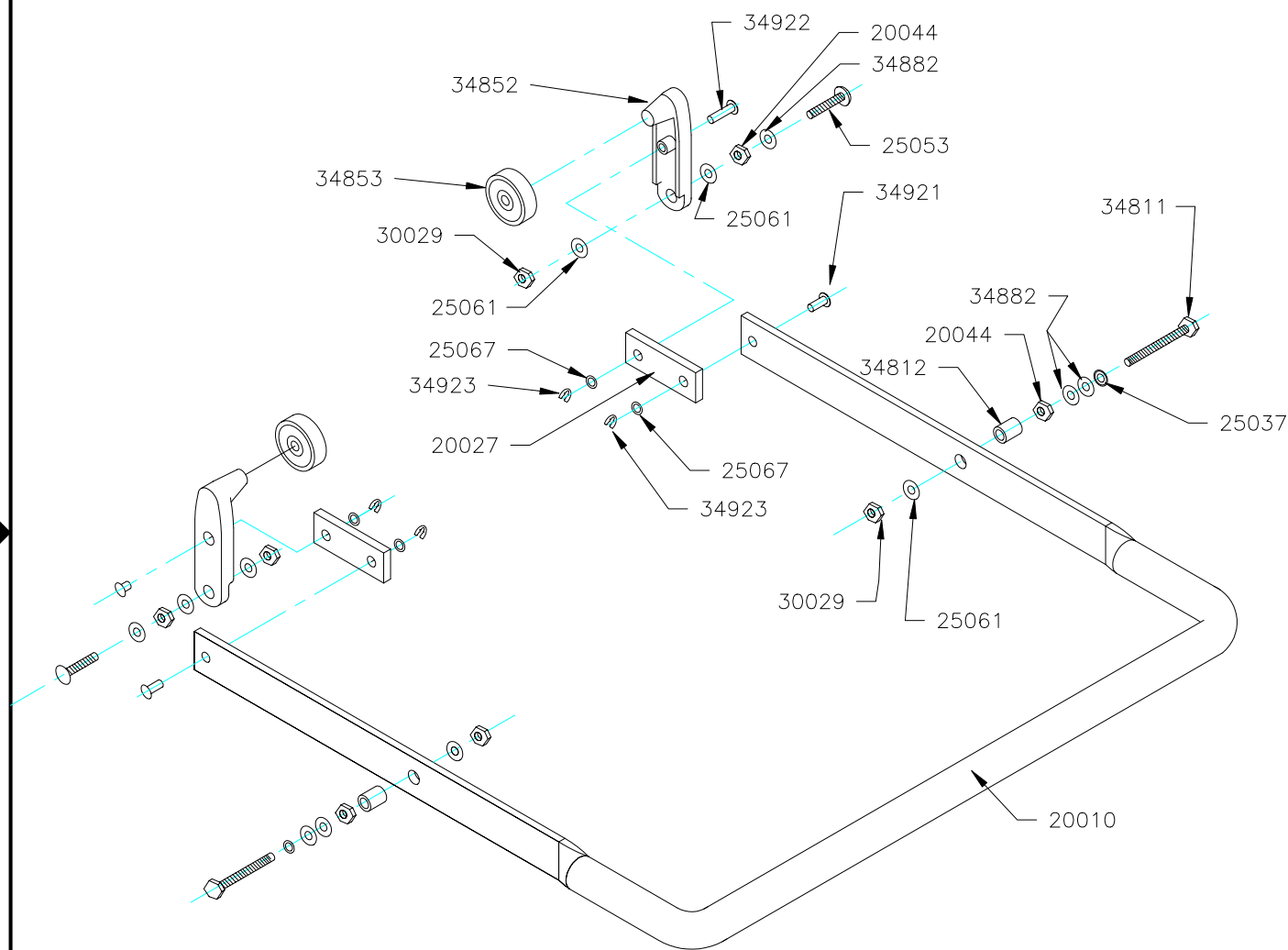
54 Winter Street
Holyoke, MA 01040, USA

AV SERIES BASE

REV A	REV DATE: 9/24/08	D.W.N. D.J.S.	DATE: 6/11/03
-------	-------------------	---------------	---------------

AV BASE ASSEMBLY

PART NUMBER	DESCRIPTION	QTY
25080	PUSH HANDLE,D1,W2	1
32988	#8 X 1 PHIL TRUSS HEAD,ZINC	4
3481701	M6X25 ALLEN HEAD SCREW	2
25000	1/4" STAR WASHER	2
32039	HANDLE SUPPORT,PLASTIC	2
34809	HANDLE SUPPORT,ALUMINUM,DS1	2
34882	M8 FLAT WASHER	4
25037	M8 WASHER	5
25054	M8 X 25 HEX BOLT	4
25085	DUAL CASTERS,FIXED,75MM,W/STUD	2
20070	GASKET,DUST PAN/LOWER HOUSING, 20X15MM	1
2509865	GASKET,ROUND,10MM,CUT AT 68.5"	1
32837	DUST PAN,35LTR,BLACK	1
34813	DUST PAN,35LTR,RED	1
25038	M8 HEX CAP-1.25X20 ZINC	1
25060	KNOB,BLACK,8MM	1
34817A	M6 BLIND PEM	2
25084	DOUBLE CASTERS,SWIVEL,75MM	2
22120	PLUG,8MM,BLACK	4
34808	LOWER HOUSING,RED	1
32836	LOWER HOUSING,BLACK	1



728 Main Street
Holyoke, MA 01040, USA

DUST PAN LEVER ASSEMBLY

REV

D.W.N.

D.J.S.

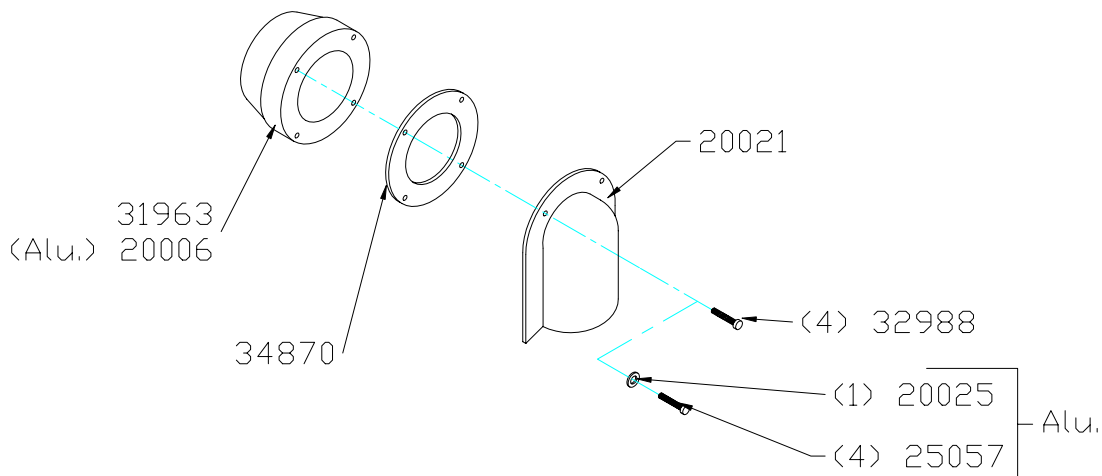
DATE:

6-11-03

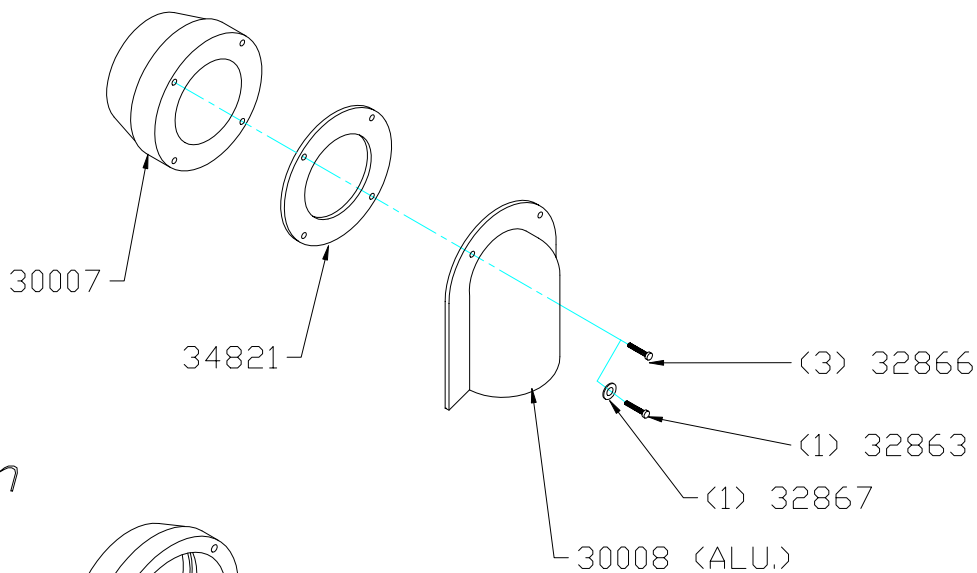
DUST PAN LEVER ASSEMBLY

PART NUMBER	DESCRIPTION	QTY
20010	FOOT LEVER	1
25061	M8 FLAT WASHER,ZINC	6
30029	M8 LOCK NUT	4
34923	C SPRING CLIP	4
25067	M6 FLAT WASHER	4
20027	FLAT STEEL PIVOT	2
34853	DUST PAN LEVER BEARING	2
34852	DUST PAN TENSION LEVER	2
34922	PIN,D=6X 19MM	2
20044	M8 HEX NUT -8	4
34882	M8 FLAT WASHER	6
25053	M8 X 35 CARRIAGE SCREW	2
34921	PIN D6X15	2
34812	SPACER FOR FOOT LEVER	2
25037	M8 WASHER,EXTERNAL	2
34811	M8 HEX BOLT,X 55-8.8	2

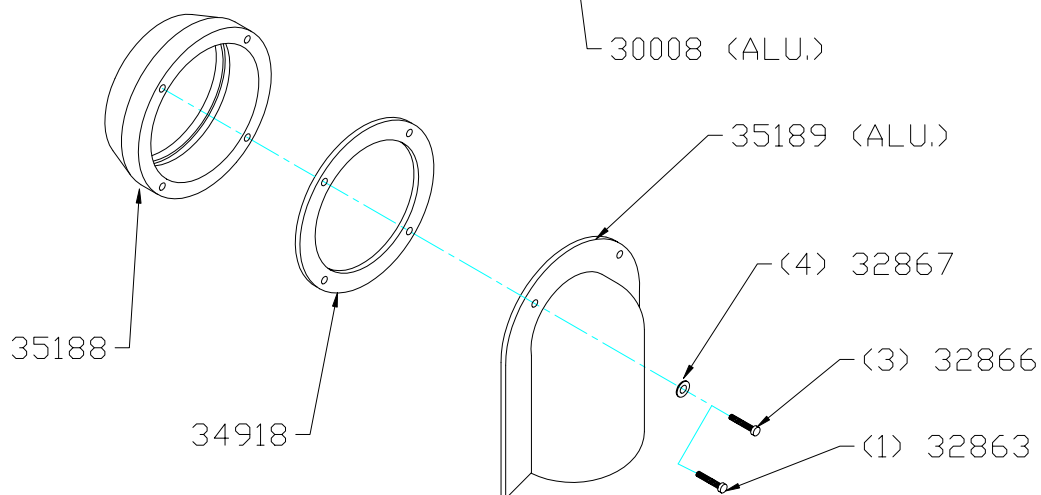
50mm



70mm



100mm



728 Main Street
Holyoke, MA 01040, USA

50mm, 70mm, & 100mm INLET ASSEMBLY

REV	D.W.N.	D.J.S.	DATE:	6-11-03
-----	--------	--------	-------	---------

50mm INLET

PART NUMBER	DESCRIPTION	QTY
31963	INLET,50MM, GFK BLACK PLASTIC	1
20006	INLET,50MM,ALUMINUM	1
34870	GASKET 50MM INLET	1
20021	INLET DEFLECTOR,50MM,METAL	1
32988	#8 X 1 PHIL TRUSS HEAD,ZINC	4
20025	WASHER,STAR LOCKING,M4	1
25057	M4X20 SOCKET SCREW CAP	4

70mm INLET

30007	INLET,70MM,ALUMINUM	1
34821	GASKET,70MM INLET	1
30008	DEFLECTOR,70MM,ALUMINUM	1
32866	M5-.8X30 SOCKET CAP,ALLEN HEAD	3
32863	M5-.8X20 SOCKET CAP SCREW	1
32867	M5 EXT TOOTH LOCK WASHER ZINC	1

100mm INLET

35188	INLET,100MM,ALUMINUM	1
34918	GASKET,100MM INLET	1
35189	DEFLECTOR,100MM,ALUMINUM	1
32867	M5 EXT TOOTH LOCK WASHER ZINC	4
32866	M5-.8X30 SOCKET CAP,ALLEN HEAD	3
32863	M5-.8X20 SOCKET CAP SCREW	1